



Adjustment Instructions

0785 Patriot Plus Flag Hinge



Compression Adjustment

+/- 1.5mm

4mm Allen Key

Rotate the Allen Key Clockwise or Anti-Clockwise to give the required compression setting
Ensure compression is evenly distributed across all hinges
Note: In rotation positive "click" positions are felt - (2 in each direction from the central position)



Height Adjustment

+ 8mm

- 0

5mm Allen Key

Rotate the Allen Key Clockwise give the required height setting
Ensure that the weight of the door is evenly distributed across all hinges



Lateral Adjustment

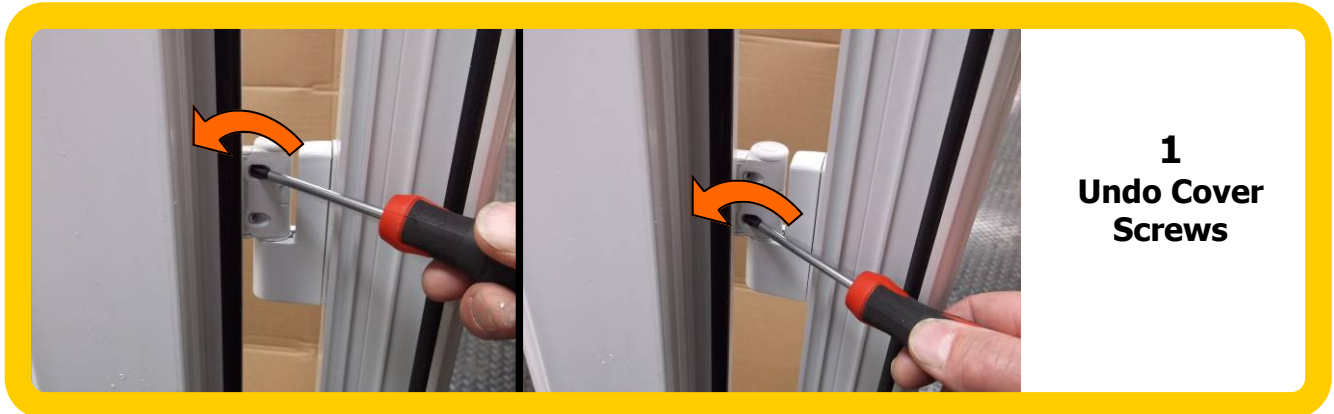
+/- 6mm

5mm Allen Key

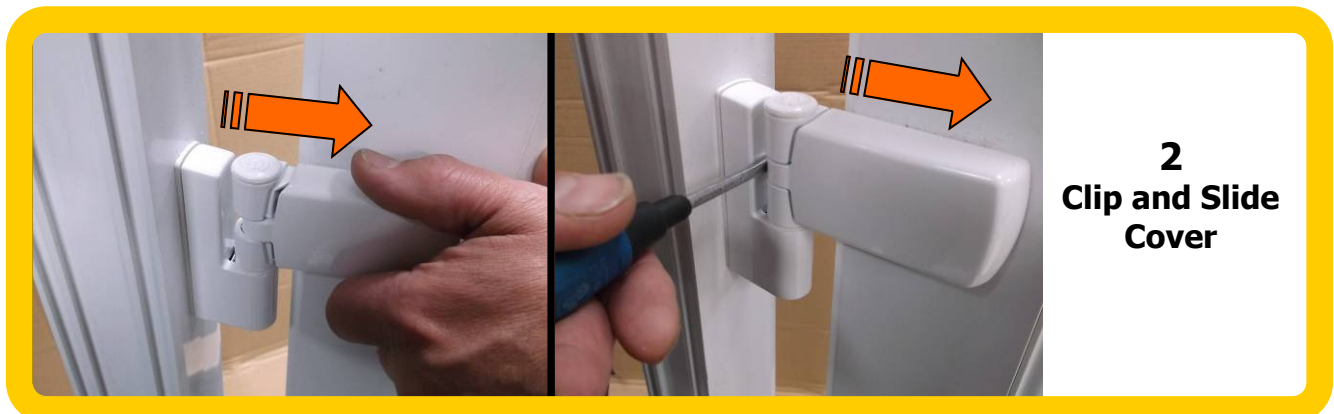
Rotate the Allen Key Clockwise or Anti-Clockwise to give the required lateral setting
Ensure even distributed across all hinges

For care and cleaning refer to Trojan Products Care and Maintenance Instructions
Complete door hardware suite available from Trojan - www.trojangroup.com - 01922 713933

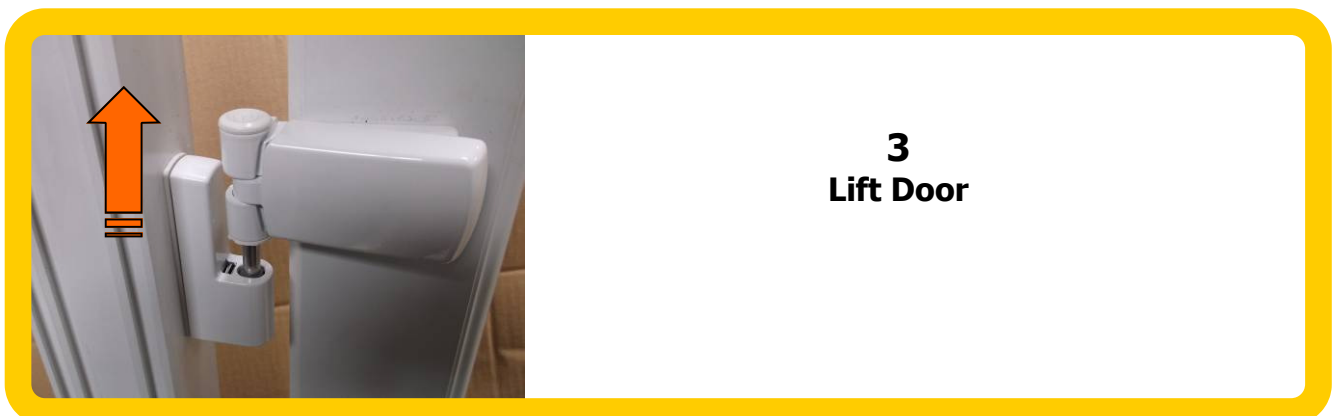
Removing the Door



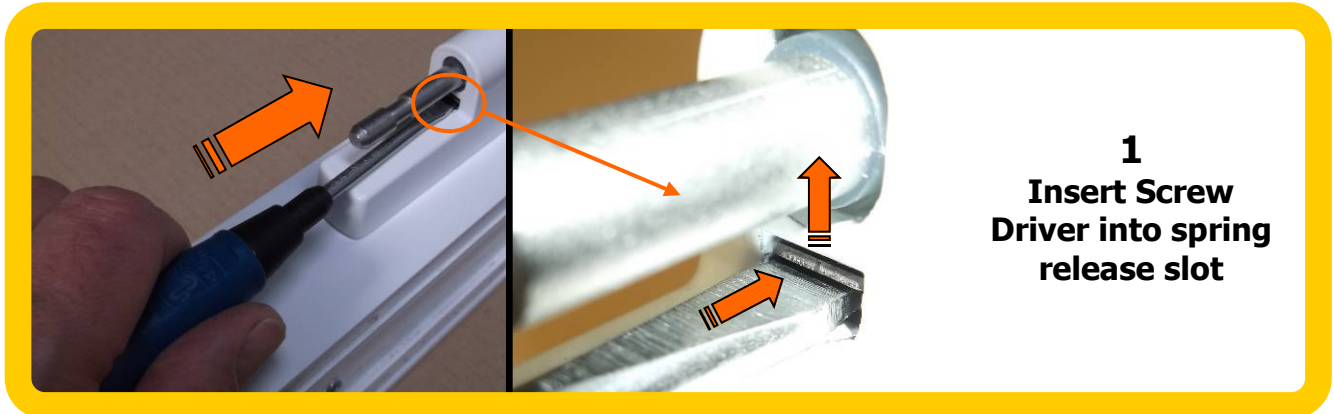
Open the door to access the Cover Retaining Screws. These are self retaining screws therefore to release the cover the screws must be completely unscrewed however the screws do not come out



Pull the cover out towards the centre of the door. On release a click will be heard. If the cover does not open by hand a screw driver can be used behind the knuckle to gently assist opening. Repeat stages 1 and 2



Removing the Hinge Body



Insert a flat end screw driver into the slot found behind the pivot pin. The screw driver must be inserted under the leaf spring in order to lift the leaf spring up (i.e. away from the door frame)



Insert a 4mm Allen Key into the Hex Slot in the bottom of the Pivot Pin. Ensuring that the Screw Driver remains in place, tap the Allen Key into the Pin until the Hinge Body starts to slide off the Frame Mount



Once the Hinge Body starts to separate from the Frame Mount it will slide off easily